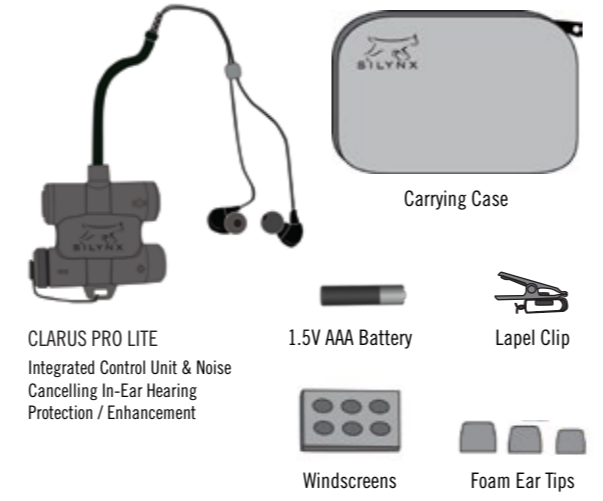


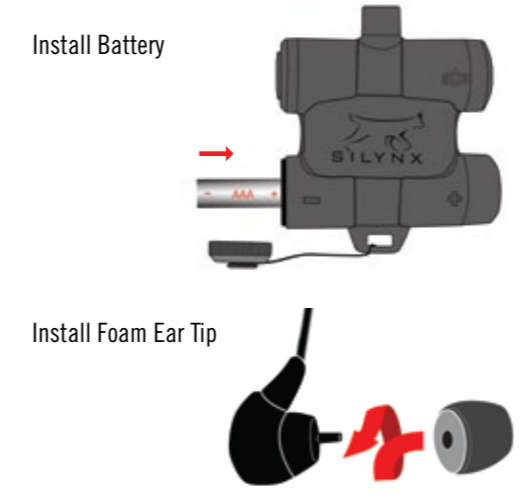
Congratulations on your purchase of the CLARUS PRO LITE headset, the only military-grade hearing protection / enhancement and audio headset adapted for civilians.

Silynx Communications is a world leader in tactical, in-ear hearing protection and communications systems. Combat proven for over a decade, our headsets are currently being used by elite US and International Special Forces, and law enforcement teams around the world. Silynx has leveraged this experience in the development of communications, audio and hearing protection products designed to operate flawlessly in hostile environments. Silynx products are for those seeking uncompromising reliability wherever they go.

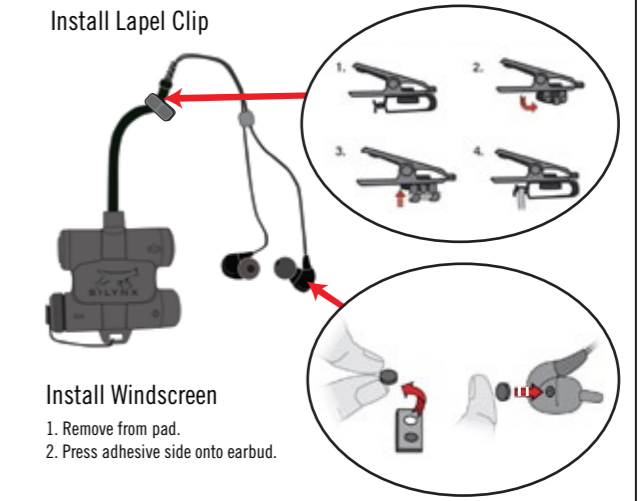
**SYSTEM COMPONENTS**



**BEFORE USE**



**BEFORE USE**





### 1-Year Limited Warranty

Silynx Communications, Inc. warrants that this product will be free from defects in design, material, and workmanship during normal use for a period of one (1) year from the date of product purchase. This warranty shall extend only to the buyer on the original receipt and may not be transferred to any other party. This warranty is valid only when and if:

- (a) Written notice of the product failure is received within the warranty period;
- (b) The product is properly packed and returned by the buyer; and
- (c) The product has not been subjected to misuse, neglect, improper use, accident, acts of war, or any unauthorized modification, repair, or alteration, as determined solely by Silynx Communications, Inc.

This warranty excludes consumable items such as ear retainers, foam ear plugs, batteries, and similar items. During the warranty period, the exclusive obligation of Silynx Communications, Inc. shall be limited to repair or replacement of any defective part or parts, or a full refund of the price originally paid for the product, based on the sole discretion of Silynx Communications, Inc. There are no other warranties, either express or implied, and in no event shall Silynx Communications, Inc. be liable for any losses or damages caused by floods, lightning, other acts of nature, or any Force Majeure.

### Customer Service

customersupport@silynxcom.com | 866.325.1731

Silynx Communications, Inc. reserves the right to change product specifications without notice



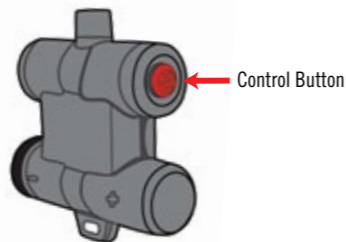
## POWER & CONTROLS

### System Power

Press and hold control button until you hear "Unit On". Once unit is powered on, you can now cycle through the "Hear-Thru" hearing enhancement settings.

### Hear-Thru

There are four Hear-Thru levels and hear-thru off. Press and release the control button to change hearing enhancement level incrementally by 3dB. Adjust enhancement level to best suit your environment and individual hearing.



## POWER & CONTROLS

The level of hearing enhancement used is dependent on your own hearing and the ambient sounds of your surroundings. The table below indicates the dB change of each level.

Action (after powering unit "on")	State	dB Gain
Press button once	High	+6dB
Press button twice	Super Normal	+12dB
Press button thrice	High	+6dB
Press button fourth time	Medium	+0dB
Press button fifth time	Low	-12dB
Press button sixth time	Hear-Thru Off	-24dB
Continue pushing button	Cycles Hear-Thru levels	N/A
Press & hold control button	Power Off / On	—

Note that when set at "hear-thru off" system is still activated and drawing low levels of power from the battery. Ensure system is "powered off" when storing.



## INSERTING EARBUDS

A firm fit ensures all-day comfort and maximum hearing protection. Here are a few tips to ensure the right fit.



- (a) Roll foam between fingers before inserting.
- (b) Hold top of ear gently back and outward to open ear canal before inserting.
- (c) Twist ear bud into ear canal until cable is on top, facing forward, and ear bud is "nested" in the "concha bowl" of your outer ear.

Watch the video at [www.silynxcom.com/videos](http://www.silynxcom.com/videos)

Note: Foam ear tips should be replaced after 3-4 weeks of use



## DONNING CLARUS PRO LITE

Unlike the cables on your standard audio ear buds, CLARUS PRO LITE is designed to route cables out of the way, by routing them around the ears and behind the head. Military and law enforcement operators have done this for years.

The control box can then be mounted on your belt, your collar, or in your pocket. Now you can wear your hear pro all day without even knowing it's there.

### To don the CLARUS PRO LITE

1. Position ear buds in ears
2. Run cables behind ears
3. Tighten nape adjuster to pull in cable slack
4. Attach control unit to back of collar, belt, pocket, or where ever is comfortable for you
5. Position lapel clip according to your preference

